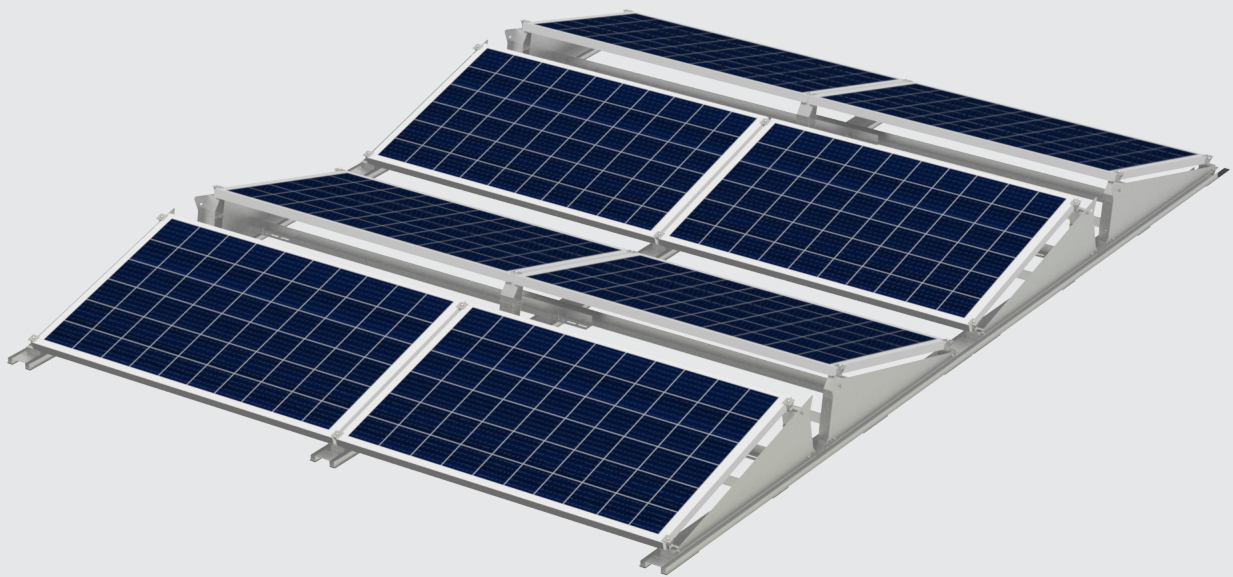


# PV-ezRack®

By Clenergy 

## Ascent Wings

Installation Guide V1.0



## 1. Introduction

PV-ezRack Ascent Wings is widely used for PV-Module mounting on flat roofs. To make it robust and longevity, it is manufactured from aluminium alloy and stainless steel.

Please review this manual thoroughly before installing PV-ezRack Ascent Wings. This manual provides:

- (1) Simple introduction of the installation relating to PV-ezRack Ascent Wings Mounting systems;
- (2) Planning and installation instructions for PV-ezRack Ascent Wings.

### List of Contents

Introduction	01
Tools & Components	02
System Overview	03
Installation Instruction	05

The PV-ezRack Ascent Wings parts, when installed in accordance with this guide. During installation, and especially when working on the roof, please comply with the appropriate Occupational Health and Safety regulations. Please also pay attention to any other relevant State or Federal regulations. Please check that you are using the latest version of the Installation Manual, which you can do by contacting Clenergy via [www.clenergy.com](http://www.clenergy.com) or contacting your local distributor.

### The installer is solely responsible for:

- Complying with all applicable local or national building codes, including any updates that may supersede this manual;
- Ensuring that PV-ezRack and other products are appropriate for the particular installation and the installation environment;
- Using only PV-ezRack parts and installer supplied parts as specified by PV-ezRack project plan (substitution of parts may void the warranty and invalidate the letter of certification);
- During installation, ensure that the self-tapping screws and metal screw have sufficient strength and shear force;
- Keep the roof waterproof system intact;
- Recycling: Recycle according to the local relative statute;
- Removal: Reverse installation process;
- Ensuring that there are no less than two professionals working on panel installation;
- Ensuring the installation of related electrical equipment is performed by licenced electricians;
- The upper and lower limit of the torque of the locking screws must be checked regularly at least once a year.
- Changes and deviations from the planning documents must be approved by Clenergy.

# Tools & Components

## 2. Tools & Components

### 2.1 Tools



Marker pen



Screw Driver



Torque Wrench  
(M6/M8)



Socket Wrench  
(13mm)



Allen Key 6mm  
(M8 Hexagon  
Socket Screw)



Tape



String



Drive Bit  
(6mm, 10mm)

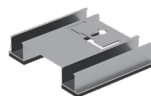
### 2.2 Components



EC-M  
End Clamp



IC-M  
Inter Clamp



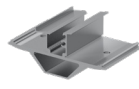
SEB-AC/120  
Start and End Base L120



MB-AC/EW  
Main Base, East- west



CB-AC/EW/250  
Connection Base L250,  
East- west



FL-AC/10 FL-AC/15  
Front Leg 10°/15°



RL-AC/10  
Rear Leg 10°



RLE-AC  
Rear Leg Extension



SWD-AC  
Side Wind Deflector



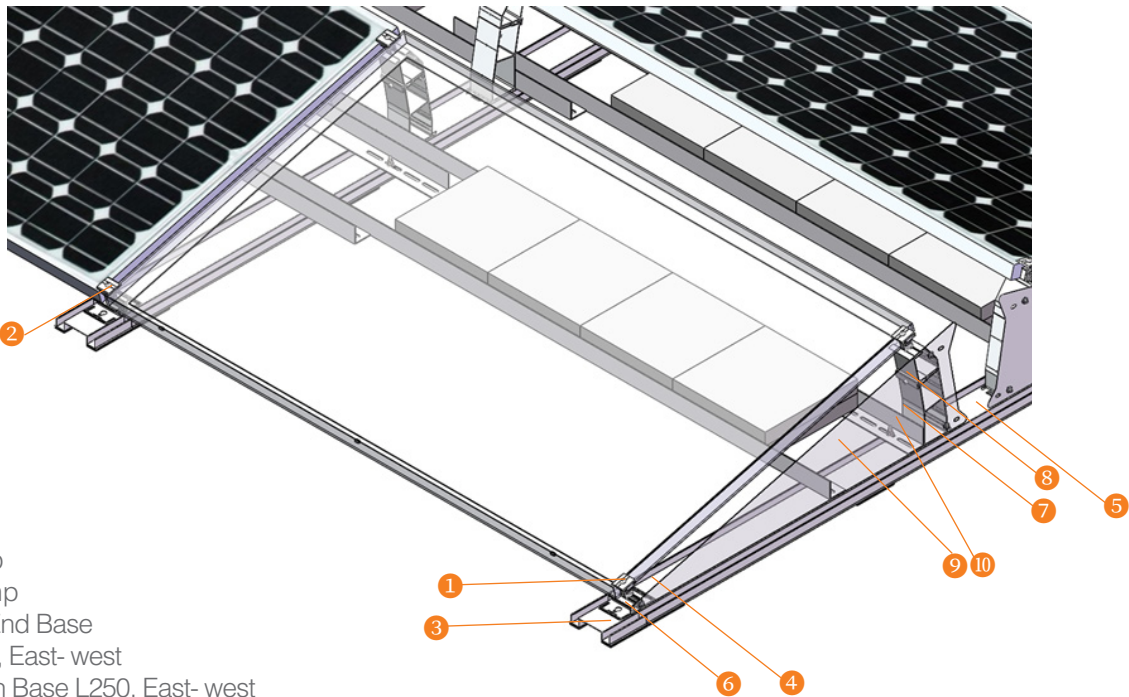
ER-AA-50/XXXX/50  
Angle AL

#### Note:

The tools in this chart are only used for installation of racking system (not included in supply scope), please consult system installation personnel about installation of electronic parts.

## 3. System Overview

### 3.1 Overview of PV-ezRack Ascent Wings system



- ① End Clamp
- ② Inter Clamp
- ③ Start and End Base
- ④ Main Base, East- west
- ⑤ Connection Base L250, East- west
- ⑥ Front Leg
- ⑦ Rear Leg 10°
- ⑧ Rear Leg Extension
- ⑨ Side Wind Deflector 10°
- ⑩ Angle AL

### 3.2 Precautions during Stainless Steel Fastener Installation

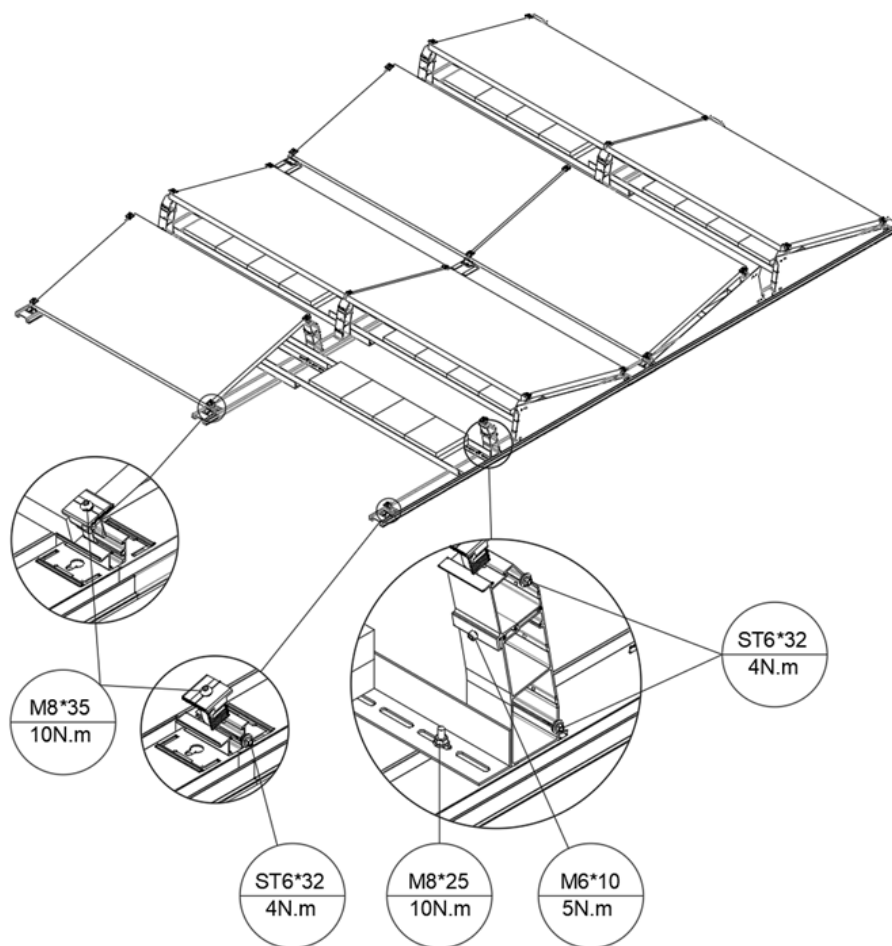
Improper operation may lead to deadlock of Nuts and Bolts. The steps below should be applied to stainless steel nut and bolt assembly to reduce this risk.

#### 3.2.1 General installation instructions:

- (1) Apply force to fasteners in the direction of thread
- (2) Apply force uniformly, to maintain the required torque
- (3) Professional tools and tool belts are recommended
- (4) In some cases, fasteners could be seized over time. As an option, if want to avoid galling or seizing of thread, apply lubricant (grease or 40# engine oil) to fasteners prior to tightening.

## 3.2.2 Safe Torques

Please refer to safe torques defined in this guide as shown below. If power tools are required, Clenergy recommends the use of low speed only. High speed and impact drivers increase the risk of bolt galling (deadlock). If deadlock occurs and you need to cut fasteners, please make sure that there is no load on the fastener before you cut it. Avoid damaging the anodized or galvanized surfaces.

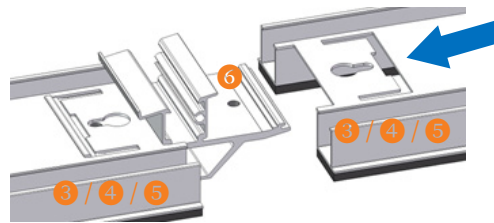
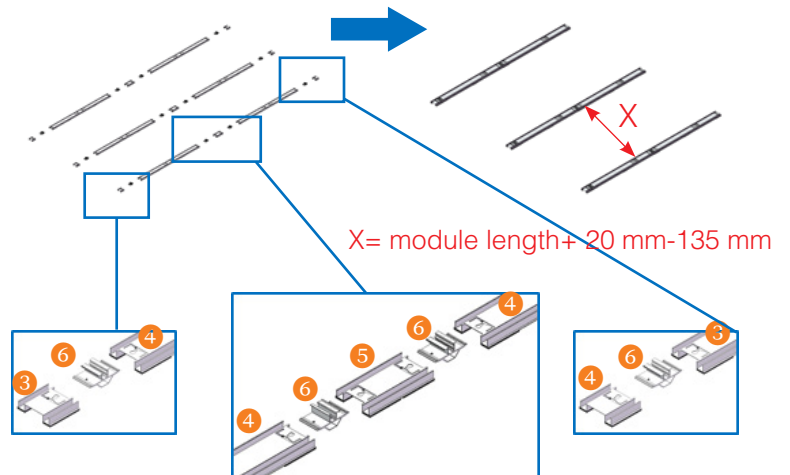


## 4. Installation Instructions

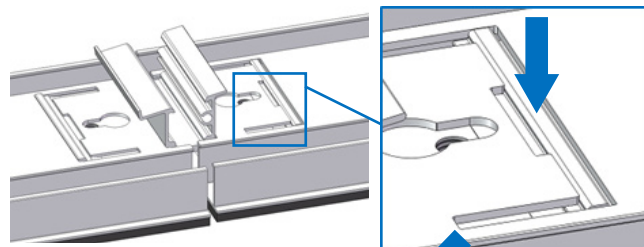
4.1.1 Mark the position of the Bases according to your plan.

4.1.2 Lay out the components, such as Start and End Base ③, Front Leg ⑥, Main Base ④ according to your plan.

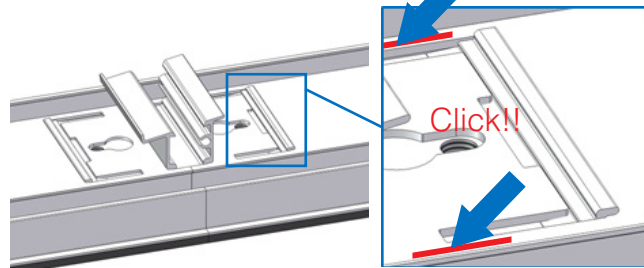
The order of components in each row is: ③ ⑥ ④ ⑥ ⑤ ⑥ ④ ⑥ ③. And always end with Start and End Base at the end of the row.



4.1.3 Connect the Base ③ / ④ / ⑤ with Front Leg using the method shown in the right figure.

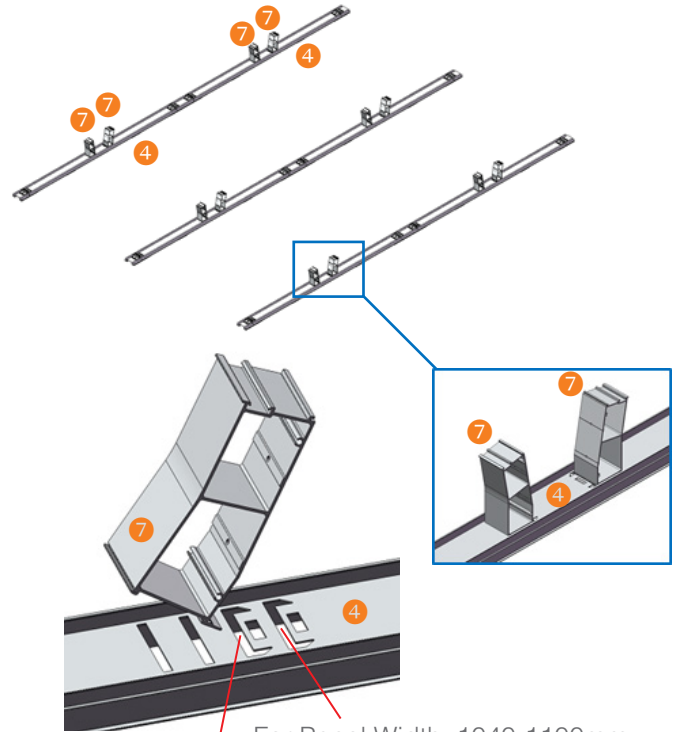


4.1.4 Place the Base on the marked position after installation.

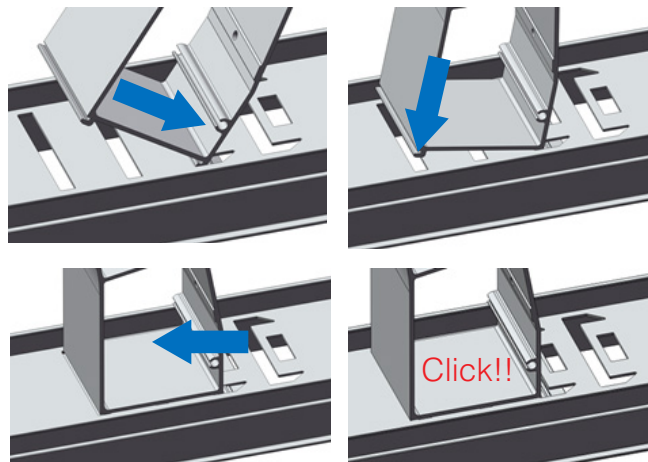


## 4.2 Rear Leg Installation

Install the Rear Leg 7 to the Main Base 4 using the method shown in the right figure.

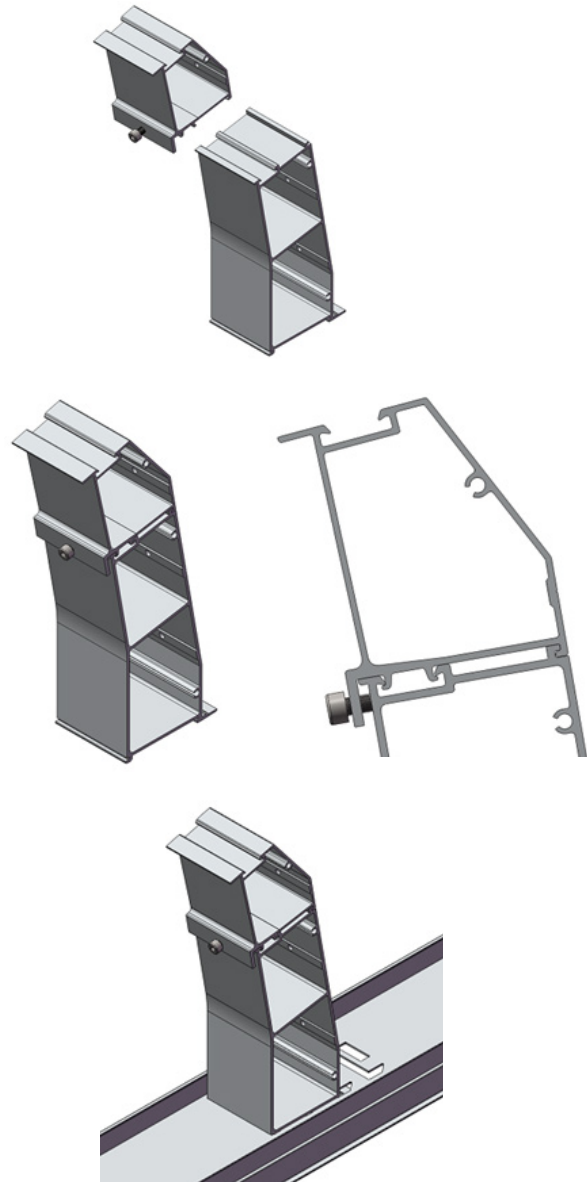


For Panel Width: 990-1039mm



## 4.3 Rear Leg Extension Installation (For 15° system)

Install the Rear Leg Extension to the Rear Leg using the method shown in the right figure.  
And then fix the M6\*10 bolt with the torque of 5 N·m

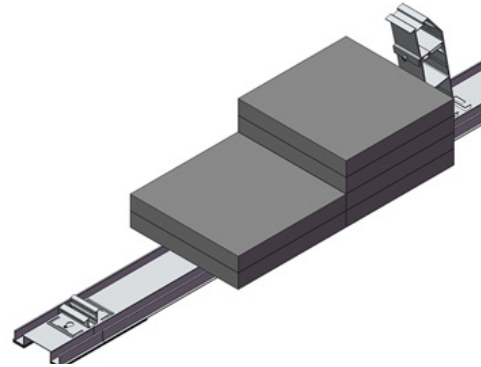




## 4.4 Placing the Ballast

### 4.4.1 Ballast per rail section.

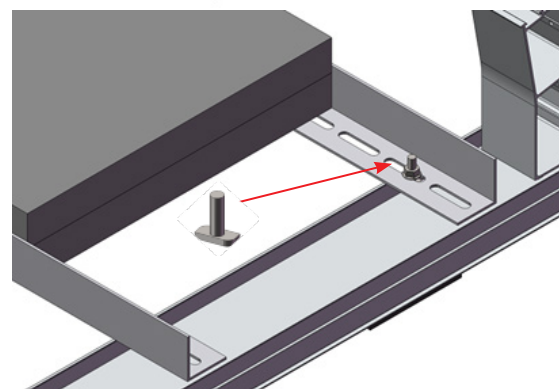
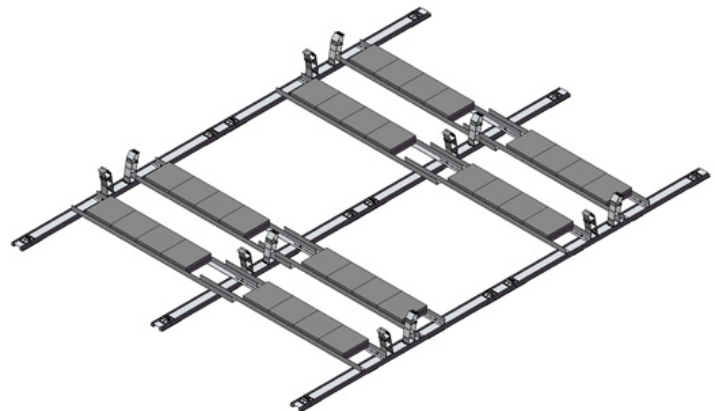
Place the ballast centrally on Main Base.



### 4.4.2 Ballast on double brace.

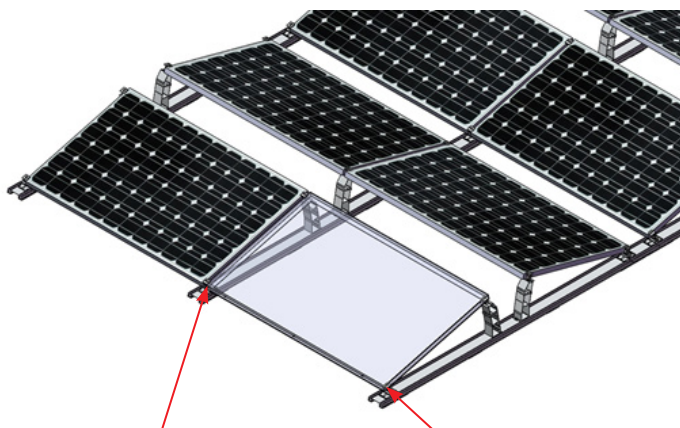
Place the ballast centrally on Angle AL when necessary.

Then fasten the nut with a torque of 10 N·m.



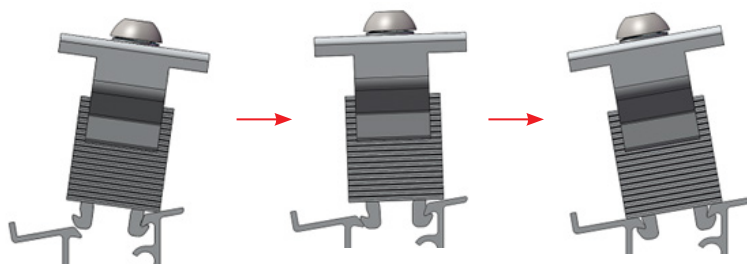
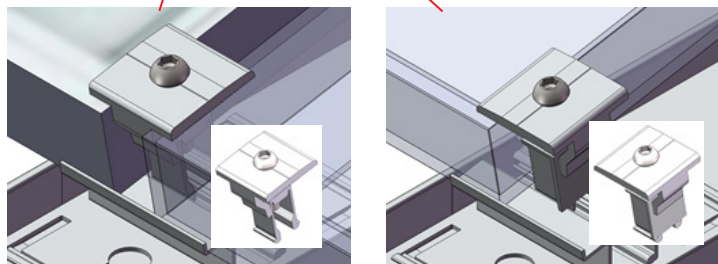
## 4.5 PV Modules Installation

4.5.1 Place the PV modules on the Front and Rear Leg. Leave a 20mm gap between PV modules for Inter Clamp.



4.5.2 Incline the Inter and End clamp to fit the top channel of Front and Rear Leg.

Press the Clamp down to securely fit into top channel until you hear a clicking sound. Fasten the hexagon socket screw with a torque of 10 N·m.

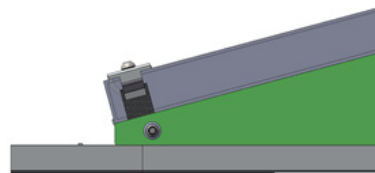
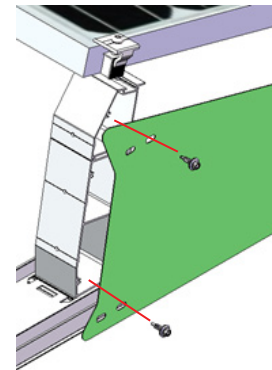
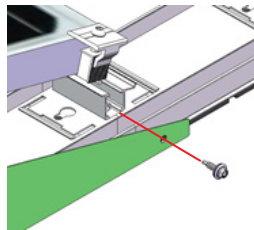
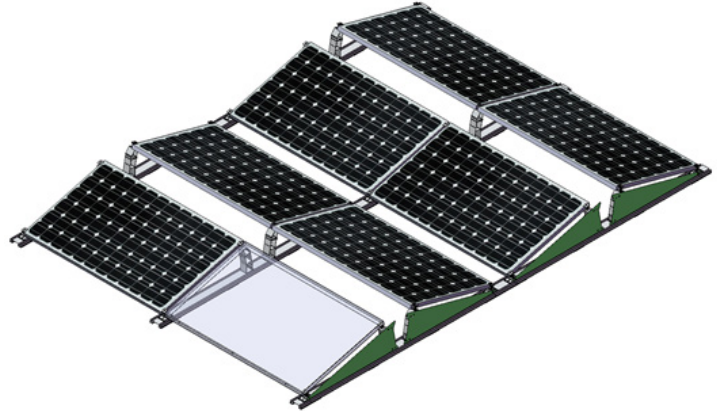


## 4.6 Side Wind Deflector Installation

4.6.1 Place Side Wind Deflector on the Main Base.

Note: Please pay attention to the direction.

Screw the Side Wind Deflector tight with ST6\*32 screw.



## 4.7 Final Inspection

4.7.1 Check that the complete system and all components have been installed according to the planning documents and no deviations.

4.7.2 Check that all hexagon socket screws have been fastened according to the recommended torque (Inter Clamps, End Clamps, Angle AL).

4.7.3 Check whether a sufficient weight of ballast has been applied in accordance with your plan.

4.7.4 Check all 'click connections' are correctly.



## Innovating renewable energy

### Clenergy Australia

1/10 Duerdin Street, Clayton VIC 3168 Australia  
 Tel: +61 3 9239 8088 Fax: +61 3 9239 8024  
 E-mail: [sales@clenergy.com.au](mailto:sales@clenergy.com.au)  
[www.clenergy.com.au](http://www.clenergy.com.au)

### Clenergy China

999-1009 Min'an Rd, Huoju Hi-tech Ind. Dev. Zone  
 Xiang'an District 361101, Xiamen, Fujian, China  
 Tel: +86 592 311 0088 Fax: +86 592 599 5028  
 E-mail: [sales@clenergy.com.cn](mailto:sales@clenergy.com.cn)  
[www.clenergy.com.cn](http://www.clenergy.com.cn)

### Clenergy EMEA

Esplanade 41, 20354 Hamburg, Germany  
 Tel: +49 (0) 40 3562 389 00  
 E-mail: [sales.emea@clenergy.com](mailto:sales.emea@clenergy.com)

### Clenergy Japan

Nittochi Yamashita Building 5th Floor  
 23 Yamashita-cho, Yokohama, 231-0023 Japan  
 Tel: +81 45 228 8226 Fax: +81 45 228 8316  
 E-mail: [sales@clenergy.co.jp](mailto:sales@clenergy.co.jp)  
[www.clenergy.jp](http://www.clenergy.jp)

### Clenergy Philippines

145 Yakal St., San Antonio village, Makati City, Philippines  
 Tel: +63 977 8407240  
 E-mail: [sales\\_ph@clenergy.com](mailto:sales_ph@clenergy.com)  
[www.clenergy.ph](http://www.clenergy.ph)

### Clenergy Thailand

9/2, 5th Floor, Vorasin Building, Soi Yasooob 2, Viphavadee-Rungsit  
 Road, Chomphon Sub-district, Chatuchak District, Bangkok 10900  
 Tel: +66 (0) 2 277 5201, +66 (0) 6 3228-0200  
 E-mail: [sales\\_th@clenergy.com](mailto:sales_th@clenergy.com), [support\\_th@clenergy.com](mailto:support_th@clenergy.com)  
[www.clenergythailand.com](http://www.clenergythailand.com)

### Clenergy Singapore

24 Raffles Place #28-01 Clifford Centre Singapore 048621  
 Tel: +65 9743 1425  
 E-mail: [vincent.chan@clenergy.com](mailto:vincent.chan@clenergy.com)

### Clenergy Malaysia

Tel: +86 18750231005  
 E-mail: [sales\\_em@clenergy.com](mailto:sales_em@clenergy.com)

### Clenergy Vietnam

Tel: +86 592 3110095  
 E-mail: [sales\\_vietnam@clenergy.com](mailto:sales_vietnam@clenergy.com);  
[susie.chen@clenergy.com](mailto:susie.chen@clenergy.com)

### Clenergy Korea

Tel: +8210-4684-8088  
 E-mail: [sales.kr@clenergy.com](mailto:sales.kr@clenergy.com)

## Worldwide Network

